



Setup Guide for:

Interfacing U-PROX Readers to Ness M1

Rev 1.0

Page 1 of 4

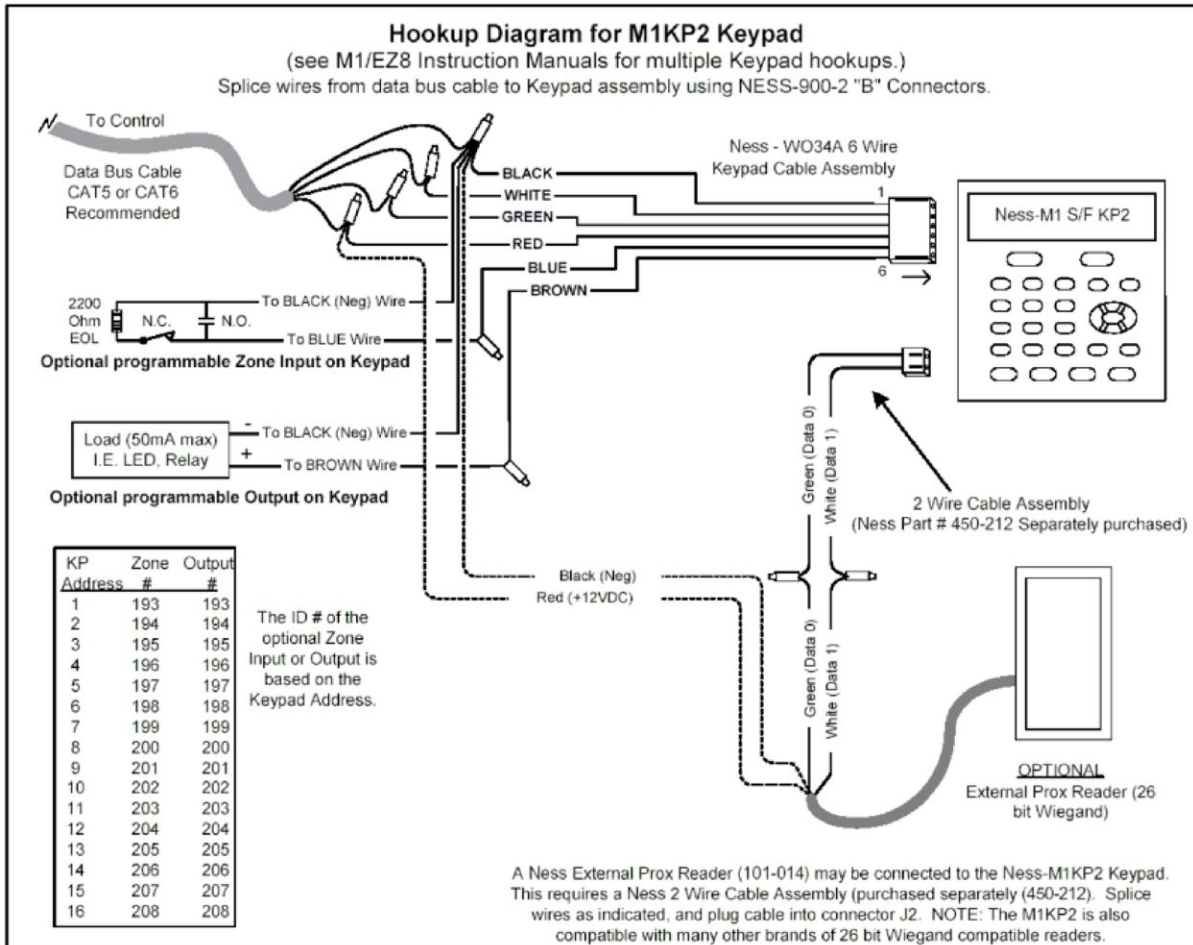
U-Prox 26 Bit Wiegand Setup (M1)

Setup the U-Prox Reader

For initial setup of the U-Prox Reader refer to *Ness-U-Prox-Setup-Guide.pdf*

Recommended to use M1KP2 Keypad

Wiring Diagram



Green (D0) White (D1) Red (+) Black (-)

M1 PROGRAMMING

Step 1. Press ELK then 6 then right arrow (>)

Step 2. Enter a valid Master or Installer code.

Step 3. Go to the user you wish to add.. Eg. Press 035 for user 35.

Step 4. Press the right arrow.. Code 0000 should be shown..

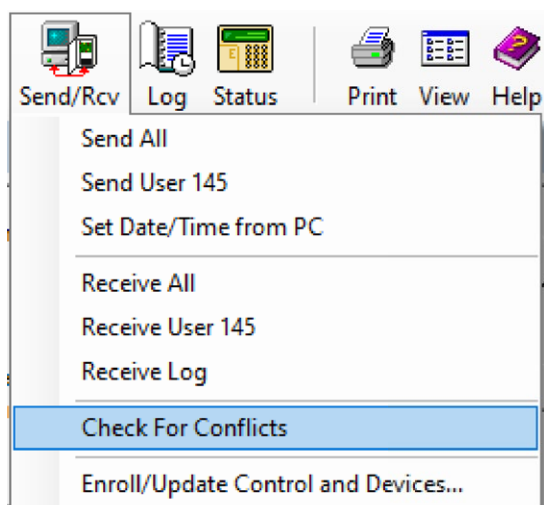
Step 5. Badge a card or Enter a 4 digit PIN then press # on the U-Prox to program. A 12 digit number will be displayed.

Step 6. Press the ELK button to save the change.

Continue to add Prox tags or PINs following the steps above.

If you are connected to M1 via ElkRP2 Software, Press Send/Rcv then

Check for Conflicts as show below.



M1 PROGRAMMING

Conflicts will be shown in yellow..

Press the “Select All” box, then press “Receive checked items to database” box.

