



## **How to install APP on Android Indoor Station**



<b>Title:</b>	How to install APP on Android Indoor Station	<b>Version:</b>	v1.0	<b>Date:</b>	2020/11/24
<b>Product:</b>	Video Intercom			<b>Page:</b>	1 of 3

## Preparation

1. This guide takes

Type	Model	Version
Indoor station	Ness 114-245B DS-KH9510-WTE1	V2.1.8_200714

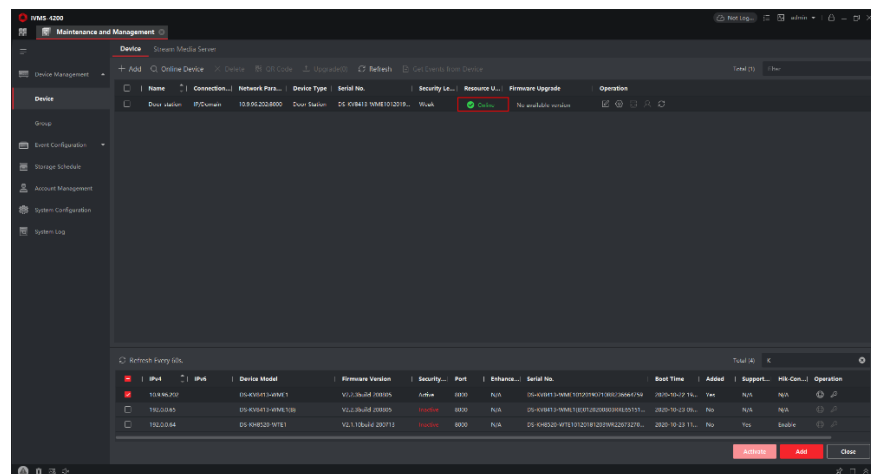
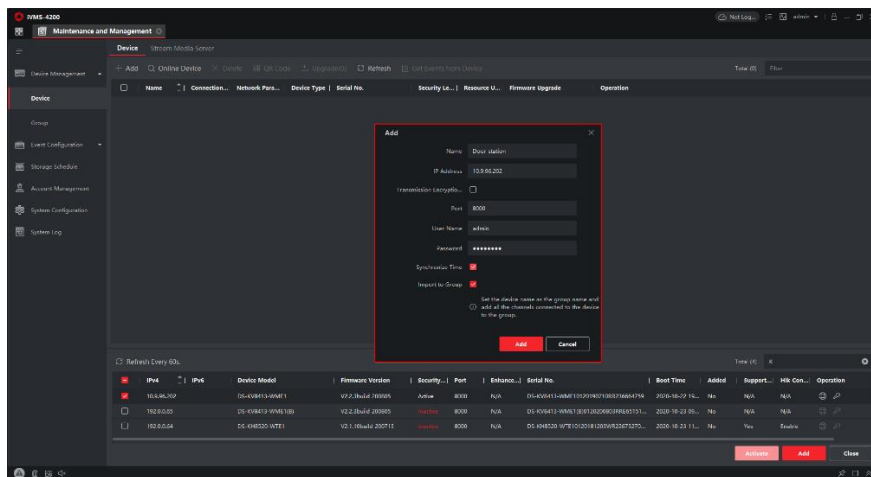
As examples to introduce install APP on android indoor station

2. Software: iVMS-4200 Version 3.4.0.9

## How to install APP on Android Indoor Station

### 1. Add Devices on iVMS-4200

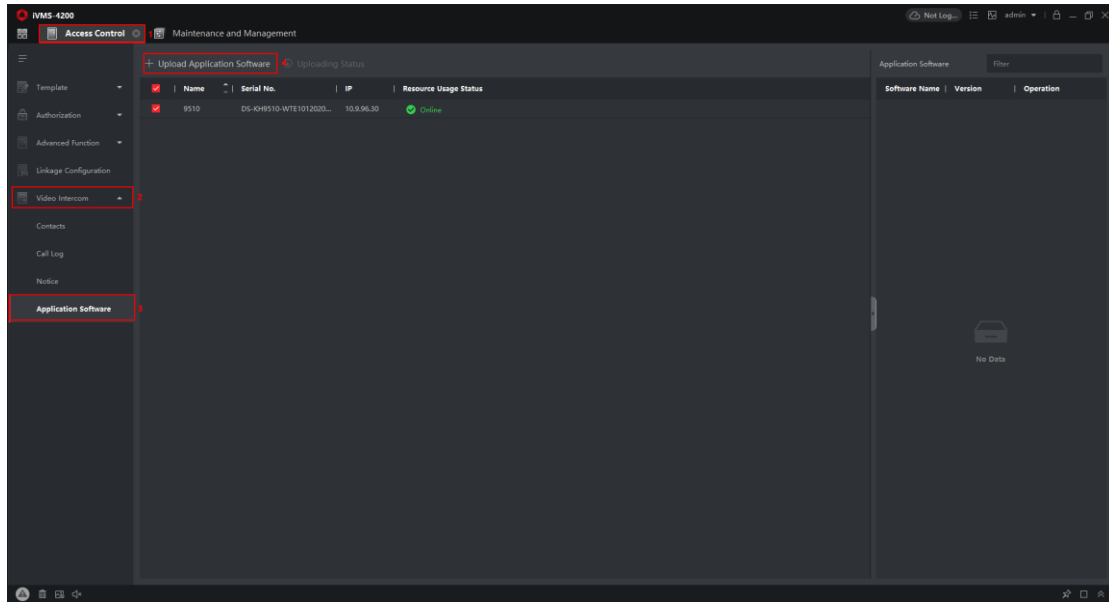
- 1) Search for online devices and add the door station on iVMS-4200, enter username and password, and then confirm that the device is online.



<b>Title:</b>	How to install APP on Android Indoor Station	<b>Version:</b>	v1.0	<b>Date:</b>	2020/11/24
<b>Product:</b>	Video Intercom	<b>Page:</b>	2 of 3		

## 2. Upload applications to Android Indoor Station

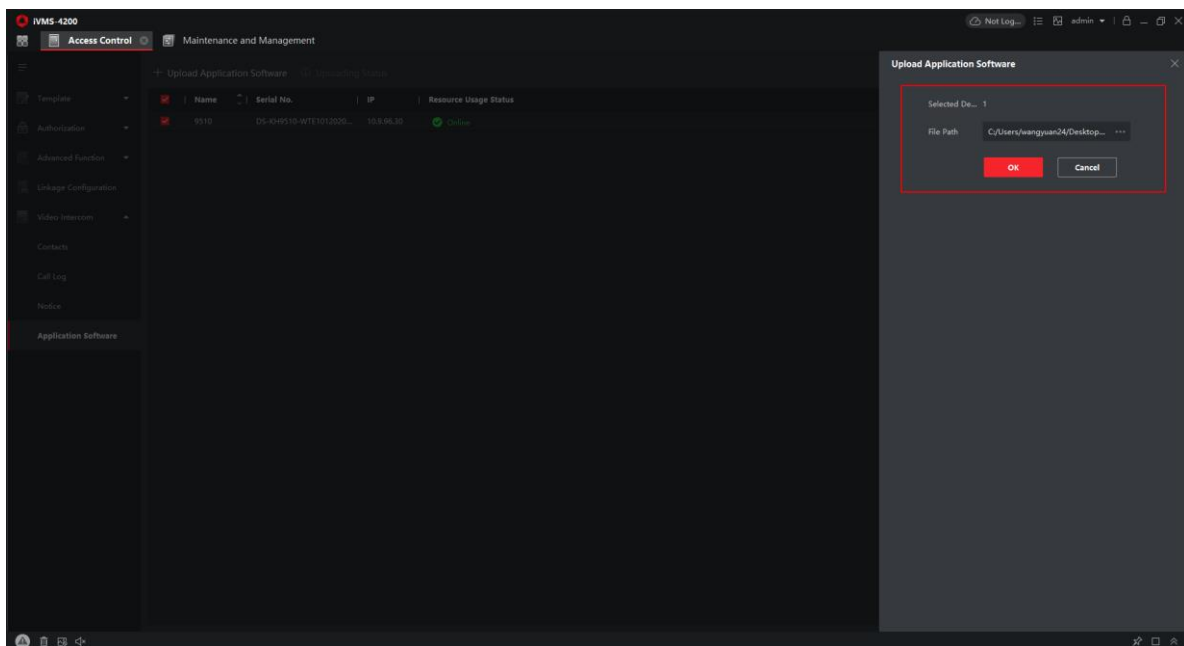
- 1) Go to **Access Control** → **Video Intercom** → **Application Software** → **Upload Application Software**.



- 2) Choose the installation package and upload it.

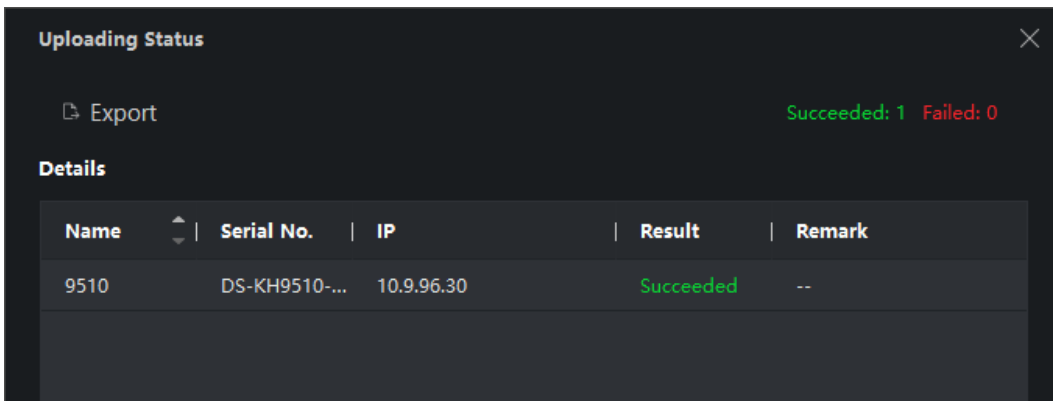
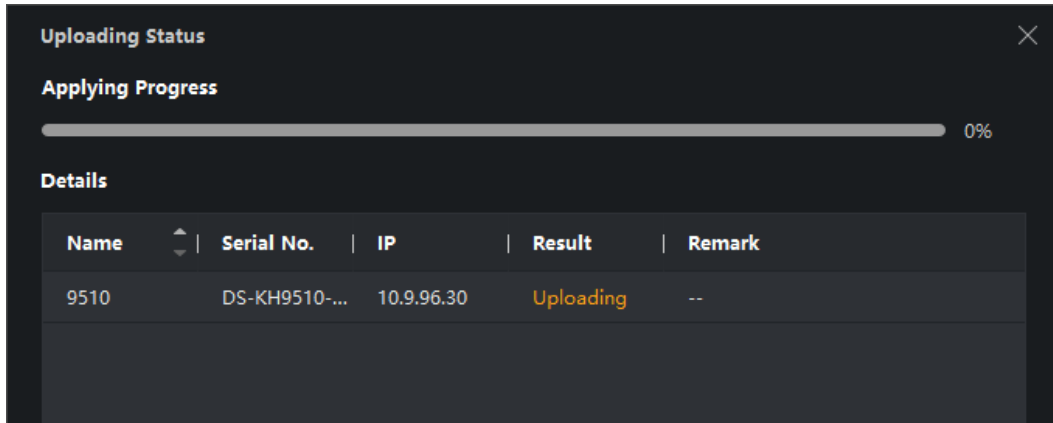
**Note:** The indoor station only supports **no more than 2 APPs**.

**Note:** The storage of the APP you intent to install should be **less than 150 MB**. The flash memory resources should be **less than 300 MB**, or the overload data would be clear, but you can customize it up to 4 GB for DS-KH9510-WTE1.

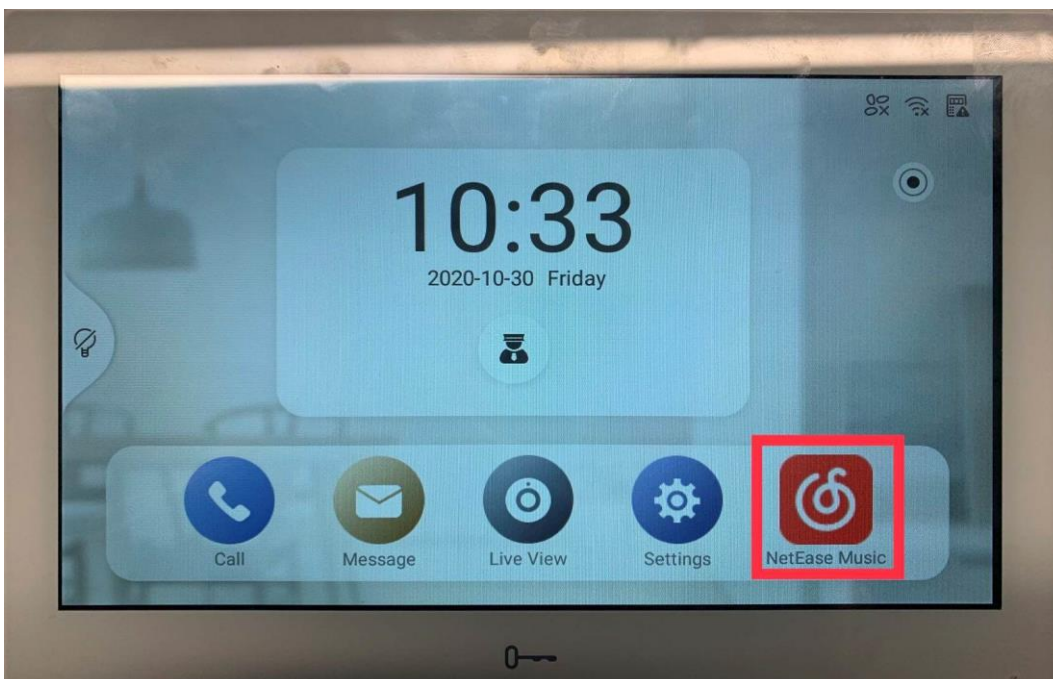


<b>Title:</b>	How to install APP on Android Indoor Station	<b>Version:</b>	v1.0	<b>Date:</b>	2020/11/24
<b>Product:</b>	Video Intercom	<b>Page:</b>	3 of 3		

- 3) After we upload the app file, the uploading Status will be shown as below, wait a few minutes, the file will be uploaded successfully.



- 4) Then the Indoor Station will install the APP automatically. After a few minutes, you will see the APP on the main page of the indoor station.





See Far, Go Further