



7" Touchscreen for M1 Control

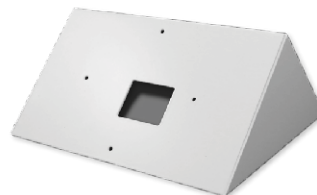
101-504

ELK-7TS

The ELK-7TS Touchscreen is a sleek, Wi-Fi-enabled 7-inch interface designed for seamless control of ELK security and automation systems. Its vibrant high-resolution display ensures an intuitive user experience with responsive touch controls.

Features/Specifications

- 7" HD Display (1024 x 600 Resolution)
- Ultra Low Profile screen with slim wall mount plate
- Responsive capacitive touchscreen, with 5-point multi-touch
- G+G Gorilla Glass screen
- Wi-Fi connectivity (802.11b/g/n 2.4GHz)
- Power: 12VDC, 1A (power supply not included)
- Dimensions: 192 x 115 x 14mm



ELK-DS47TS
Optional Desk Stand

101-504-BRK



ELK-POE47TS
Optional Ethernet/PoE
Adapter

101-504-POE



Innovative Electronic Solutions
www.ness.com.au



NSW Ph 02 8825 9222
sales@ness.com.au

VIC Ph 03 9875 6400
nessmelb@ness.com.au

QLD Ph 07 3399 4910
nessbris@ness.com.au

WA Ph 08 9328 2511
nessper@ness.com.au

SA Ph 08 8152 0000
adelaide@ness.com.au

Desk Stand

for ELK-7TS Touchscreen

ELK-DS47TS

The ELK-DS47TS is a sleek, versatile stand designed for mounting the ELK-7TS touchscreen on desks, tables, or countertops. Its pre-drilled holes align perfectly with the ELK-7TS backplate for a secure fit.

A large cable access hole simplifies wiring, while the wedge design provides excellent cable management and space for the optional ELK-POE47TS Ethernet/PoE adapter.



101-504-BRK

Features/Benefits

- Pre-drilled holes for mounting back plate
- Large cable access hole
- Ample space for installing optional ELK-POE47TS Ethernet/PoE adapter
- Anti-slip foam strips on feet of stand

Key Specifications

- Dimensions: 164 x 146 x 76mm
- Color: White
- Includes 4) self-tapping mounting screws, 2) adhesive cable tie mounts, and 2) cable ties

Ethernet & PoE Adapter

for ELK-7TS Touchscreen

ELK-POE47TS

The ELK-POE47TS is an Ethernet and PoE adapter for the ELK-7TS touchscreen, offering two key functions:

- Ethernet Adapter: Connects the ELK-7TS to a network via a patch cable when Wi-Fi is unavailable or undesired. In this setup, a separate 12VDC power source is required for the touchscreen.
- PoE Adapter: Provides both power and network connectivity when paired with a PoE-enabled switch or injector, with power supplied by the PoE device.



101-504-POE

Features/Benefits

- RJ45 port and pre-wired touchscreen connector for easy installation
- Network processor and traffic LEDs indicators
- 15" cable to touchscreen

Key Specifications

- LAN Bandwidth: 10/100 Mbps
- Supported PoE standard: 802.11at
- Required PoE Power Input: 24VDC - 57 VDC
- Power Output (when used with PoE switch or injector): 12VDC, 1.5A



Innovative Electronic Solutions
www.ness.com.au



NSW Ph 02 8825 9222
sales@ness.com.au

VIC Ph 03 9875 6400
nessmelb@ness.com.au

QLD Ph 07 3399 4910
nessbris@ness.com.au

WA Ph 08 9328 2511
nessper@ness.com.au

SA Ph 08 8152 0000
adelaide@ness.com.au