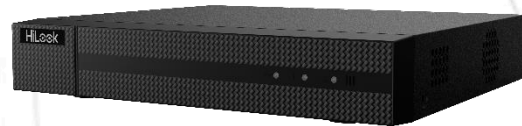


## NVR-108MH-C/8P (D) NVR

114-801  
114-801-3



### Key Feature

- Up to 8-ch IP camera inputs
- H.265+/H.265/H.264+/H.264 video formats
- Up to 1-ch@8 MP/3-ch@4 MP/6-ch@1080p decoding capacity
- Up to 80 Mbps incoming bandwidth



### Professional and Reliability

- H.265+ compression effectively reduces the storage space by up to 75%

### HD Video Output

- Provides simultaneous HDMI and VGA outputs
- HDMI video output at up to 4K resolution

### Storage and Playback

- 1 SATA interface for HDD connection (up to 8 TB capacity per HDD)
- Smart search/smart playback to improve the playback efficiency

### Smart Function

- 4-ch Motion Detection 2.0
- Support multiple VCA (Video Content Analytics) events
- Configurable special camera smart functions, such as VCA detection (motion, line crossing, intrusion, etc.)

### Network & Ethernet Access

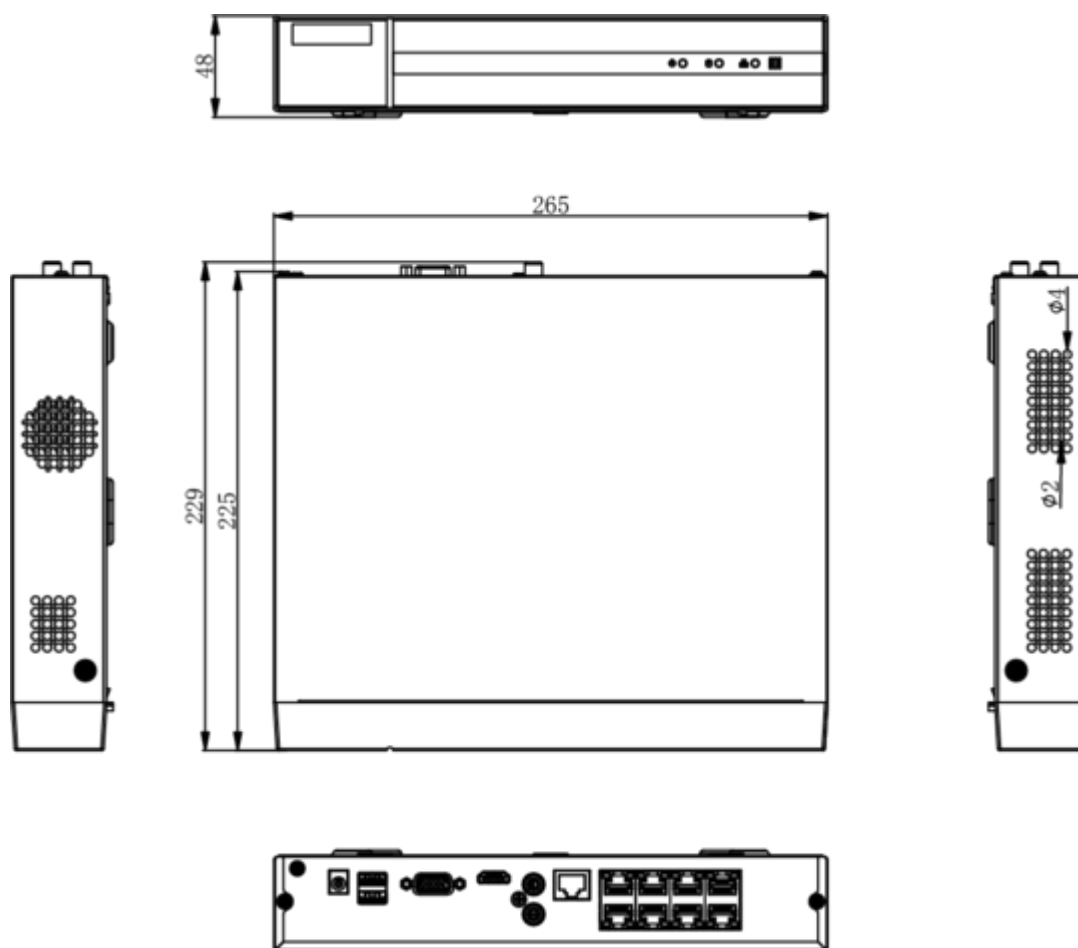
- 8 independent PoE network interfaces
- 1 self-adaptive 10/100 Mbps Ethernet interface
- HiLookVision for easy network management

## ▪ Specification

| <b>Motion Detection 2.0</b> |   |
|-----------------------------|---|
| Human/Vehicle Analysis      | 4-ch  |
| <b>Video and Audio</b>      |   |
| IP Video Input              | 8-ch  |
| Incoming Bandwidth          | 80 Mbps   |
| Outgoing Bandwidth          | 80 Mbps   |
| HDMI Output                 | 1-ch, 4K (4096 x 2160)/30 Hz, 4K (3840 x 2160)/30 Hz, 2K (2560 x 1440)/60 Hz, 1920 x 1080/60 Hz, 1600 x 1200/60 Hz, 1280 x 1024/60 Hz, 1280 x 720/60 Hz |
| VGA Output                  | 1-ch, 1920 x 1080/60 Hz, 1280 x 1024/60 Hz, 1280 x 720/60 Hz  |
| Video Output Mode           | HDMI/VGA simultaneous output  |
| Audio Output                | 1-ch, RCA (Linear, 1 K $\Omega$ )   |
| Two-Way Audio               | 1-ch, RCA (2.0 Vp-p, 1k $\Omega$ )  |
| <b>Decoding</b>             |   |
| Decoding Format             | H.265+/H.265/H.264+/H.264   |
| Recording Resolution        | 8 MP/6 MP/5 MP/4 MP/3 MP/1080p/UXGA/ 720p/VGA/4CIF/DCIF/2CIF/CIF/QCIF   |
| Synchronous playback        | 8-ch  |
| Decoding Capability         | 1-ch@8 MP (30 fps)/3-ch@4 MP (30 fps)/6-ch@1080p (30 fps)   |
| Stream Type                 | Video, Video & Audio  |
| Audio Compression           | G.711ulaw/G.711alaw/G.722/G.726   |
| <b>Network</b>              |   |
| Remote Connection           | 32  |
| Network Protocol            | TCP/IP, DHCP, IPv4, IPv6, DNS, DDNS, NTP, RTSP, SADP, SMTP, SNMP, NFS, iSCSI, ISUP, UPnP™, HTTP, HTTPS  |
| Network Interface           | 1 RJ-45 10/100 Mbps self-adaptive Ethernet interface  |
| <b>PoE</b>                  |   |
| Interface                   | 8-ch, RJ-45 10/100 Mbps self-adaptive Ethernet interface  |
| Power                       | ≤ 75 W  |
| Standard                    | IEEE 802.3 af/at  |
| <b>Auxiliary Interface</b>  |   |
| SATA                        | 1 SATA interface  |
| Capacity                    | Up to 8 TB capacity for each disk   |
| USB Interface               | 2 x USB 2.0   |
| Alarm In/Out                | N/A   |
| <b>General</b>              |   |
| Power Supply                | 48 VDC, 1.88 A  |

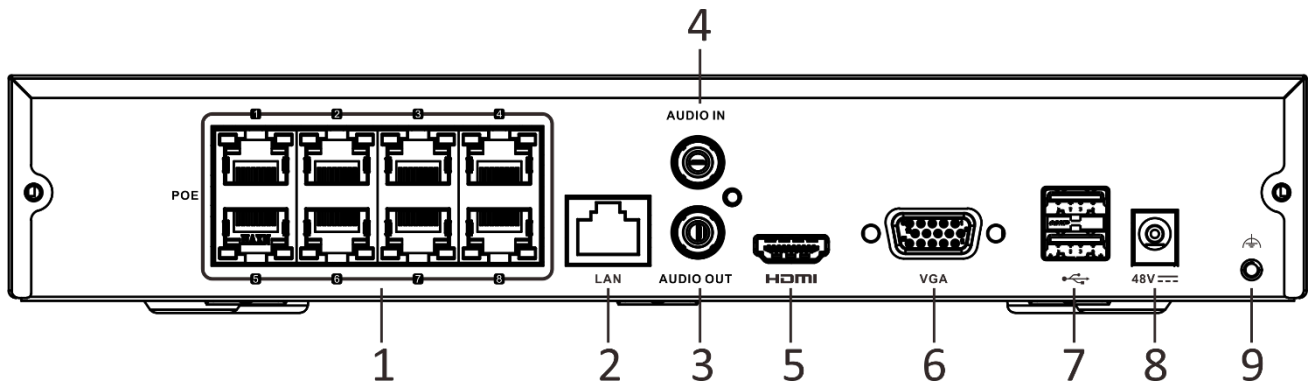
|                       |  |
|-----------------------|--|
| Consumption           | ≤ 10 W (without HDD and PoE off)                                       |
| Working Temperature   | -10 °C to 55 °C (14 °F to 131 °F)                                      |
| Working Humidity      | 10% to 90%   |
| Dimension (W × D × H) | 265 × 225 × 48 mm (10.2" × 8.9" × 1.9")                                |
| Weight                | ≤ 1 kg (without HDD, 2.2 lb.)  |
| <b>Certification</b>  |  |
| FCC                   | Part 15 Subpart B, ANSI C63.4-2014                                     |
| CE                    | EN 55032: 2015, EN 61000-3-2, EN 61000-3-3, EN 50130-4, EN 55035: 2017 |

## Dimension



scale/1:1;Unit/mm

## Physical Interface



| No. | Description                          | No. | Description                |
|-----|--------------------------------------|-----|----------------------------|
| 1   | Network interfaces with PoE function | 6   | VGA output (DB9 connector) |
| 2   | LAN interface                        | 7   | USB interfaces             |
| 3   | AUDIO OUT                            | 8   | Power supply               |
| 4   | AUDIO IN                             | 9   | GND                        |
| 5   | HDMI interface                       |     |                            |

## Available Model

NVR-108MH-C/8P (D)



Innovative Electronic Solutions  
www.ness.com.au



NSW Ph 02 8825 9222  
sales@ness.com.au

VIC Ph 03 9875 6400  
nessmelb@ness.com.au

QLD Ph 07 3399 4910  
nessbris@ness.com.au

WA Ph 08 9328 2511  
nessper@ness.com.au

SA Ph 08 8152 0000  
adelaide@ness.com.au