

Fitting the 100-243 PIR bracket on Ness X/Q Series Sensors

INSTALLATION NOTES



NESS XLINE



100-234
XIR100H
or QIR100H
Standard PIR



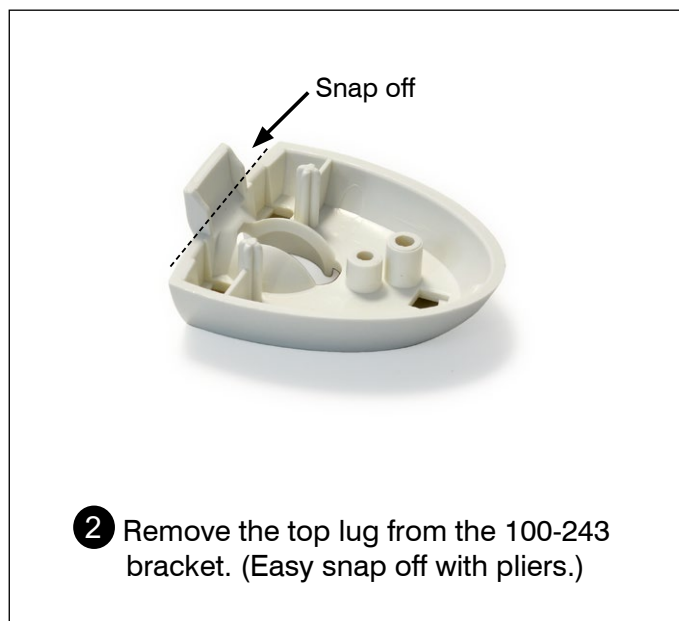
100-235
XIR200H
or QIR200H
Deluxe PIR



100-205
XDT200H
or QDT200H-A
Dual M/Wave &
PIR



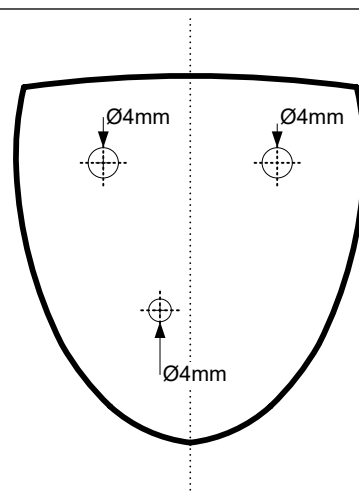
1 Remove the PIR board.



2 Remove the top lug from the 100-243 bracket. (Easy snap off with pliers.)



3 Place the drilling template on the PIR back housing, drill 3 x 4mm holes and remove the cable knockout in the back housing.

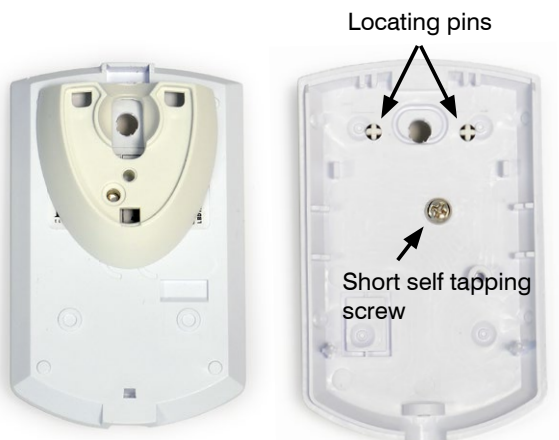


**DRILLING TEMPLATE
ACTUAL SIZE**

When printing this page, select 'Actual Size' in your pdf print settings.

Fitting the 100-243 PIR bracket on Ness X/Q Series Sensors

INSTALLATION NOTES



- 4** Fit the bracket to the PIR housing and secure with one screw from the inside as shown.



- 5** Feed the cable through the bracket and PIR cable entry hole.



- 6** Clip on and screw the bracket's retaining clamp to lock the swivel in place.

ORDERING INFORMATION

100-243 Ness Universal PIR Mounting Bracket

INSTRUCTIONS APPLY TO

100-234 Ness XIR100H & QIR100H Standard PIR
 100-235 Ness XIR200H & QIR200H Deluxe PIR
 100-205 Ness XDT200H & QDT200H-A Dual M/Wave & PIR



Innovative Electronic Solutions
www.ness.com.au

NSW Ph 02 8825 9222
sales@ness.com.au

VIC Ph 03 9875 6400
nessmelb@ness.com.au

QLD Ph 07 3399 4910
nessbris@ness.com.au

WA Ph 08 9328 2511
nessper@ness.com.au

SA Ph 08 8152 0000
adelaide@ness.com.au